

Model No.: CL-COBWW320-24 -IP65R 3000K



Features:

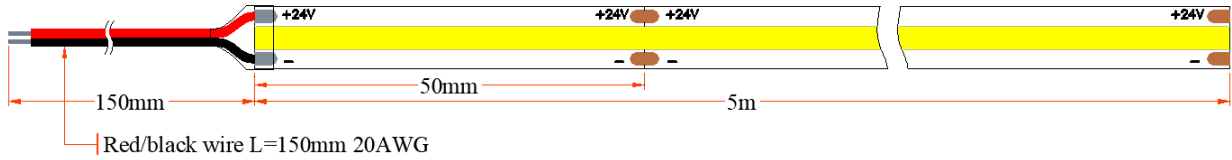
1. 320pcs Led per meter, 50mm per cut.
2. 2Oz Double layer PCB
3. 2 years warranty against manufacturing faults with the use of heat dissipation system, eg aluminium profile. Without heat dissipation system, warranty is 1 year.



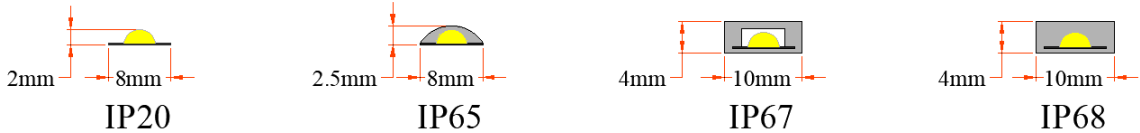
Technical Parameters:

Brand & Model:	CLIG CL-COBWW320-24-IP65 3000K
LED Type; Wattage/M; Input Voltage	320pcs led/m; 8W/M; 24V
CCT (lm/M); CRI; Beam Angle	3000K (+/-680lm/M); CRI >90, 180°
FPCB Width; Thickness	White 8mm; 2Oz Double layer
Working Temperature:	-40°C~+45°C

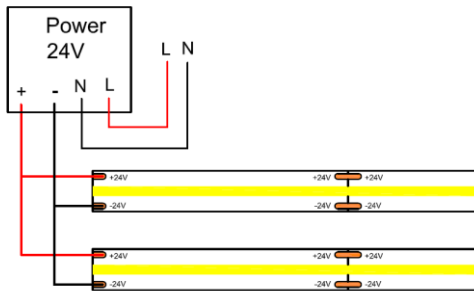
Life Span:	50,000 Hours
IP Grade:	IP65
Wire; Per Cut; Pitch	One side with 15cm long 20AWG; 50mm/Cut
Package:	5meter per roll



SELS-COBX320-24-YR



Connection Diagram:



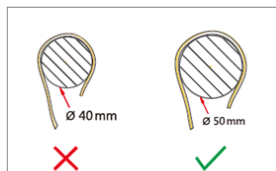
Non-Waterproof
Naked strip, with self-adhesive backing, for indoor or dry location use.

LED Strip Light Installation Guide:

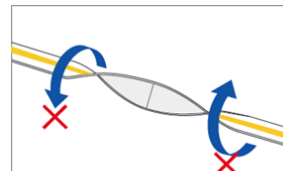
 Step 1:	Dry the position to be flat and smooth before putting on the Strips	 Step 2:	Press the LED Strip gently between electronic components and stick it to the surface. Avoid pressing electronic components.
 Step 3:	LED Strip can be cut only between soldering pads	 Step 4:	Solder wires on soldering pads (label +/-). The Solder temperature may not exceed 330 for maximum duration of 2 seconds.
 Step 5:	During installation, make sure Strip Light isn't receiving electricity in any manner. Better wearing an Anti-static Wrist Strap to avoid Static electricity.	 Step 6:	LED Strips better be installed on Aluminum (or Material with similar thermal conduction) to avoid LEDs overheating and ensure proper heat dissipation.



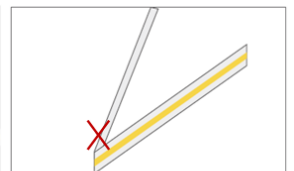
The LED strip must be installed carefully; Excessive operation, bending and extrusion may damage the product and cause warranty invalid.



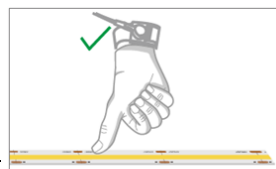
Do not bend LED Strip light to a diameter less than 40mm(1.5 inches)



Do not bend LED Strip light like this, and this way will break the LED and bonding pad



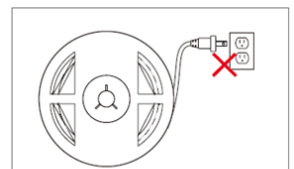
Do not fold or crease LED Strip light, and this way will break the LED and bonding pad



Touching LED, pls wear the electrostatic ring for avoiding ESD



Do not put press heavily or put excessive pressure on surface of LED



Do not connect directly LED Strip light to AC /DC high voltage power!